

John Perry Fittings



SS2CJP: 90° Elbow, 15TRFJP x 15TRFJP, Polish ID/OD, John Perry						
Tube OD (Size)	A	B	C	D	Part Number 304	Part Number 316L
1"	2.187				SS2CJP7-1-304	SS2CJP7-1-316
1.5"	2.969				SS2CJP7-1.5-304	SS2CJP7-1.5-316
2"	3.750				SS2CJP7-2-304	SS2CJP7-2-316
2.5"	4.594				SS2CJP7-2.5-304	SS2CJP7-2.5-316
3"	5.438				SS2CJP7-3-304	SS2CJP7-3-316
4"	7.218				SS2CJP7-4-304	SS2CJP7-4-316



SS2EJP: 90° Elbow, 14PRFJP x 14PRFJP & Hex Nut (304) Both Ends Polish ID/OD, John Perry						
Tube OD (Size)	A	B	C	D	Part Number 304	Part Number 316L
1"	2.187				SS2EJP7-1-304	SS2EJP7-1-316
1.5"	2.969				SS2EJP7-1.5-304	SS2EJP7-1.5-316
2"	3.719				SS2EJP7-2-304	SS2EJP7-2-316
2.5"	4.594				SS2EJP7-2.5-304	SS2EJP7-2.5-316
3"	5.406				SS2EJP7-3-304	SS2EJP7-3-316
4"	7.218				SS2EJP7-4-304	SS2EJP7-4-316



SS2UJP: 180° Return Bend, 14PRFJP x 14PRFJP & Hex Nut (304) Both Ends Polish ID/OD, John Perry						
Tube OD (Size)	A	B	C	D	Part Number 304	Part Number 316L
1"	3.000				SS2UJP7-1-304	SS2UJP7-1-316
1.5"	4.500				SS2UJP7-1.5-304	SS2UJP7-1.5-316
2"	6.000				SS2UJP7-2-304	SS2UJP7-2-316
2.5"	7.500				SS2UJP7-2.5-304	SS2UJP7-2.5-316
3"	9.000				SS2UJP7-3-304	SS2UJP7-3-316
4"	12.00				SS2UJP7-4-304	SS2UJP7-4-316

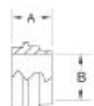


SS2FJP: 90° Elbow, 15TRFJP x 14PRFJP & Hex Nut (304) on 14PRF End, Polish ID/OD, John Perry						
Tube OD (Size)	A	B	C	D	Part Number 304	Part Number 316L
1"	2.187	2.187			SS2FJP7-1-304	SS2FJP7-1-316
1.5"	2.969	2.969			SS2FJP7-1.5-304	SS2FJP7-1.5-316
2"	3.719	3.750			SS2FJP7-2-304	SS2FJP7-2-316
2.5"	4.594	4.594			SS2FJP7-2.5-304	SS2FJP7-2.5-316
3"	5.406	5.438			SS2FJP7-3-304	SS2FJP7-3-316
4"	7.218	7.218			SS2FJP7-4-304	SS2FJP7-4-316



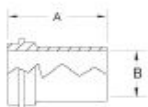
SS13H: Union Hex Nut, John Perry					
Tube OD (Size)	A	B	C	D	Part Number 304
1"	0.906	1.812			SS13H-1-304
1.5"	0.968	2.406			SS13H-1.5-304
2"	1.062	3.000			SS13H-2-304
2.5"	1.187	3.594			SS13H-2.5-304
3"	1.281	4.188			SS13H-3-304
4"	1.500	5.438			SS13H-4-304

John Perry Fittings



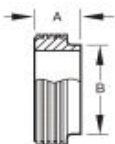
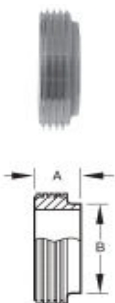
SS14PRFJP: SHORT Plain Bevel Ferrule, John Perry

Tube OD (Size)	A	B	C	D	Part Number 304	Part Number 316L
1"	0.687	0.870			SS14PRFJP-1-304	SS14PRFJP-1-316
1.5"	0.719	1.370			SS14PRFJP-1.5-304	SS14PRFJP-1.5-316
2"	0.719	1.870			SS14PRFJP-2-304	SS14PRFJP-2-316
2.5"	0.844	2.370			SS14PRFJP-2.5-304	SS14PRFJP-2.5-316
3"	0.906	2.870			SS14PRFJP-3-304	SS14PRFJP-3-316
4"	1.218	3.834			SS14PRFJP-4-304	SS14PRFJP-4-316



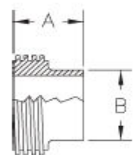
SS14AJP: LONG Plain Bevel Ferrule, John Perry

Tube OD (Size)	A	B	C	D	Part Number 304	Part Number 316L
1"	1.375	0.870			SS14AJP-1-304	SS14AJP-1-316
1.5"	1.500	1.370			SS14AJP-1.5-304	SS14AJP-1.5-316
2"	1.500	1.870			SS14AJP-2-304	SS14AJP-2-316
2.5"	1.750	2.370			SS14AJP-2.5-304	SS14AJP-2.5-316
3"	1.750	2.870			SS14AJP-3-304	SS14AJP-3-316
4"	1.750	3.834			SS14AJP-4-304	SS14AJP-4-316



SS15TRFJP: SHORT Threaded Bevel Ferrule, John Perry

Tube OD (Size)	A	B	C	D	Part Number 304	Part Number 316L
1"	0.687	0.870			SS15TRFJP-1-304	SS15TRFJP-1-316
1.5"	0.719	1.370			SS15TRFJP-1.5-304	SS15TRFJP-1.5-316
2"	0.719	1.870			SS15TRFJP-2-304	SS15TRFJP-2-316
2.5"	0.844	2.370			SS15TRFJP-2.5-304	SS15TRFJP-2.5-316
3"	0.906	2.870			SS15TRFJP-3-304	SS15TRFJP-3-316
4"	1.218	3.834			SS15TRFJP-4-304	SS15TRFJP-4-316



SS15AJP: LONG Threaded Bevel Ferrule, John Perry

Tube OD (Size)	A	B	C	D	Part Number 304	Part Number 316L
1"	1.375	0.870			SS15AJP-1-304	SS15AJP-1-316
1.5"	1.500	1.370			SS15AJP-1.5-304	SS15AJP-1.5-316
2"	1.500	1.870			SS15AJP-2-304	SS15AJP-2-316
2.5"	1.750	2.370			SS15AJP-2.5-304	SS15AJP-2.5-316
3"	1.750	2.870			SS15AJP-3-304	SS15AJP-3-316
4"	1.750	3.834			SS15AJP-4-304	SS15AJP-4-316



SS16AJP--- John Perry Solid End Cap

Tube OD (Size)	A	B	C	D	Part Number 304	Part Number 316L
1"	1.125				SS16AJP-1-304	SS16AJP-1-316
1.5"	1.656				SS16AJP-1.5-304	SS16AJP-1.5-316
2"	2.187				SS16AJP-2-304	SS16AJP-2-316
2.5"	2.656				SS16AJP-2.5-304	SS16AJP-2.5-316
3"	3.187				SS16AJP-3-304	SS16AJP-3-316
4"	4.187				SS16AJP-4-304	SS16AJP-4-316