

# Pipe Fittings



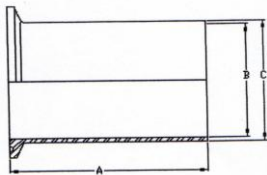
**SS13MHMV---Schedule 5 Heavy Duty Single Pin Clamp, 304**

Tube OD (Size)	A	Part Number 304
1"	2.122	SS13MHMV-1-304
1.5"	2.654	SS13MHMV-1.5-304
2"	3.185	SS13MHMV-2-304
2.5"	3.717	SS13MHMV-2.5-304
3"	4.263	SS13MHMV-3-304
4"	5.263	SS13MHMV-4-304
6"	7.700	SS13MHMV-6-304



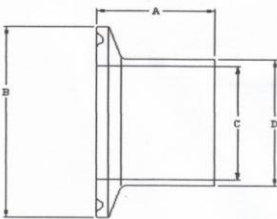
**SS14WMV--- Schedule 5 Short-Weld Ferrule**

Tube OD (Size)	A	B	C	Part Number 304	Part Number 316L
1"	0.500	1.315	1.185	SS14WMV-1-304	SS14WMV-1-316
1.5"	0.500	1.900	1.770	SS14WMV-1.5-304	SS14WMV-1.5-316
2"	0.500	2.375	2.245	SS14WMV-2-304	SS14WMV-2-316
2.5"	0.500	2.875	2.709	SS14WMV-2.5-304	SS14WMV-2.5-316
3"	0.500	3.500	3.334	SS14WMV-3-304	SS14WMV-3-316
4"	0.625	4.500	4.334	SS14WMV-4-304	SS14WMV-4-316
6"	0.875	6.625	6.407	SS14WMV-6-304	SS14WMV-6-316
8"	0.875	8.625	8.407	SS14WMV-8-304	SS14WMV-8-316



**SS14WLMV--- Schedule 5 Light Tank Weld Ferrule**

Tube OD (Size)	A	B	C	Part Number 304	Part Number 316L
1"	3.000	1.185	1.315	SS14WLMV-1-304	SS14WLMV-1-316
1.5"	3.000	1.770	1.900	SS14WLMV-1.5-304	SS14WLMV-1.5-316
2"	3.000	2.245	2.375	SS14WLMV-2-304	SS14WLMV-2-316
2.5"	4.000	2.709	2.875	SS14WLMV-2.5-304	SS14WLMV-2.5-316
3"	4.000	3.334	3.500	SS14WLMV-3-304	SS14WLMV-3-316
4"	4.000	4.334	4.500	SS14WLMV-4-304	SS14WLMV-4-316
6"	6.000	6.407	6.625	SS14WLMV-6-304	SS14WLMV-6-316



**SS14MVW--- Schedule 5 Heavy Wall Tank Ferrule**

Tube OD (Size)	A	B	C	D	Part Number 304	Part Number 316L
1"	1.625	1.984	1.185	1.531	SS14MPV-1-304	SS14MPV-1-316
1.5"	1.625	2.516	1.770	2.109	SS14MPV-1.5-304	SS14MPV-1.5-316
2"	1.750	3.047	2.245	2.594	SS14MPV-2-304	SS14MPV-2-316
2.5"	1.750	3.579	2.709	3.109	SS14MPV-2.5-304	SS14MPV-2.5-316
3"	1.812	4.125	3.334	3.562	SS14MPV-3-304	SS14MPV-3-316
4"	2.125	5.125	4.334	4.562	SS14MPV-4-304	SS14MPV-4-316
6"	2.125	7.195	6.407	6.625	SS14MPV-6-304	SS14MPV-6-316
8"	2.125	9.200	8.407	8.625	SS14MPV-8-304	SS14MPV-8-316
10"	2.125	11.32	10.48	10.75	SS14MPV-10-304	SS14MPV-10-316
12"	2.125	13.31	12.42	12.75	SS14MPV-12-304	SS14MPV-12-316



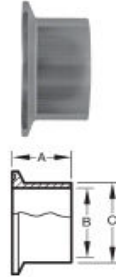
**SS14WMX--- Schedule 10 Short-Weld Ferrule**

Tube OD (Size)	A	B	C	Part Number 304	Part Number 316L
1"	0.500	1.315	1.097	SS14WMX-1-304	SS14WMX-1-316
1.5"	0.500	1.900	1.682	SS14WMX-1.5-304	SS14WMX-1.5-316
2"	0.500	2.375	2.157	SS14WMX-2-304	SS14WMX-2-316
2.5"	0.500	2.875	2.635	SS14WMX-2.5-304	SS14WMX-2.5-316
3"	0.500	3.500	3.260	SS14WMX-3-304	SS14WMX-3-316
4"	0.625	4.500	4.260	SS14WMX-4-304	SS14WMX-4-316
6"	0.875	6.625	6.357	SS14WMX-6-304	SS14WMX-6-316
8"	0.875	8.625	8.329	SS14WMX-8-304	SS14WMX-8-316

# Pipe Fittings



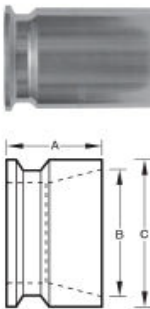
SSL14AMV--- <u>Schedule 5</u> Long-Weld Ferrule					
Tube OD (Size)	A	B	C	Part Number 304	Part Number 316L
1"	1.125	1.097	1.315	SSL14AMV-1-304	SSL14AMV-1-316
1.5"	1.125	1.770	1.900	SSL14AMV-1.5-304	SSL14AMV-1.5-316
2"	1.125	2.245	2.375	SSL14AMV-2-304	SSL14AMV-2-316
2.5"	1.125	2.709	2.875	SSL14AMV-2.5-304	SSL14AMV-2.5-316
3"	1.125	3.334	3.500	SSL14AMV-3-304	SSL14AMV-3-316
4"	1.125	4.334	4.500	SSL14AMV-4-304	SSL14AMV-4-316
6"	1.500	6.407	6.625	SSL14AMV-6-304	SSL14AMV-6-316



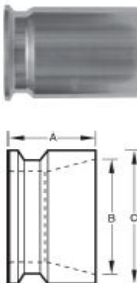
SSL14AMX--- <u>Schedule 10</u> Long-Weld Ferrule					
Tube OD (Size)	A	B	C	Part Number 304	Part Number 316L
1"	1.125	1.097	1.315	SSL14AMX-1-304	SSL14AMX-1-316
1.5"	1.125	1.770	1.900	SSL14AMX-1.5-304	SSL14AMX-1.5-316
2"	1.125	2.245	2.375	SSL14AMX-2-304	SSL14AMX-2-316
2.5"	1.125	2.709	2.875	SSL14AMX-2.5-304	SSL14AMX-2.5-316
3"	1.125	3.334	3.500	SSL14AMX-3-304	SSL14AMX-3-316
4"	1.125	4.334	4.500	SSL14AMX-4-304	SSL14AMX-4-316



SS16AMV-- <u>Schedule 5</u> End Cap					
Tube OD (Size)	A	B		Part Number 304	Part Number 316L
1"	0.250	1.984		SS16AMV-1-304	SS16AMV-1-316
1.5"	0.250	2.516		SS16AMV-1.5-304	SS16AMV-1.5-316
2"	0.250	3.047		SS16AMV-2-304	SS16AMV-2-316
2.5"	0.250	3.579		SS16AMV-2.5-304	SS16AMV-2.5-316
3"	0.313	4.125		SS16AMV-3-304	SS16AMV-3-316
4"	0.313	5.125		SS16AMV-4-304	SS16AMV-4-316
6"	0.437	7.195		SS16AMV-6-304	SS16AMV-6-316
8"	0.437	9.200		SS16AMV-8-304	SS16AMV-8-316
10"	0.500	11.32		SS16AMV-10-304	SS16AMV-10-316

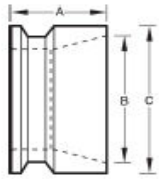


SS19MPV--- Clamp x <u>Schedule 5 Pipe</u> B/W Adapter						
Tube OD (Size)	A	B	C	Wall Thickness	Part Number 304	Part Number 316L
1/2"	1.125	0.710	0.840	0.065	SS19MPV-0.5-304	SS19MPV-0.5-316
3/4"	1.125	0.920	1.050	0.065	SS19MPV-0.75-304	SS19MPV-0.75-316
1"	1.125	1.185	1.315	0.065	SS19MPV-1-304	SS19MPV-1-316
1.5"	1.125	1.770	1.900	0.065	SS19MPV-1.5-304	SS19MPV-1.5-316
2"	1.125	2.245	2.375	0.065	SS19MPV-2-304	SS19MPV-2-316
2.5"	1.125	2.709	2.875	0.083	SS19MPV-2.5-304	SS19MPV-2.5-316
3"	1.125	3.334	3.500	0.083	SS19MPV-3-304	SS19MPV-3-316
4"	1.125	4.334	4.500	0.109	SS19MPV-4-304	SS19MPV-4-316
6"	1.125	6.407	6.625	0.109	SS19MPV-6-304	SS19MPV-6-316



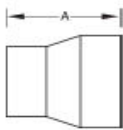
SS19MPX--- Clamp x <u>Schedule 10 Pipe</u> B/W Adapter						
Tube OD (Size)	A	B	C	Wall Thickness	Part Number 304	Part Number 316L
1/2"	1.125	0.674	0.840	0.083	SS19MPX-0.5-304	SS19MPX-0.5-316
3/4"	1.125	0.884	1.050	0.083	SS19MPX-0.75-304	SS19MPX-0.75-316
1"	1.125	1.097	1.315	0.109	SS19MPX-1-304	SS19MPX-1-316
1.5"	1.125	1.682	1.900	0.109	SS19MPX-1.5-304	SS19MPX-1.5-316
2"	1.125	2.157	2.375	0.109	SS19MPX-2-304	SS19MPX-2-316
2.5"	1.125	2.635	2.875	0.109	SS19MPX-2.5-304	SS19MPX-2.5-316
3"	1.125	3.260	3.500	0.109	SS19MPX-3-304	SS19MPX-3-316
4"	1.125	4.260	4.500	0.120	SS19MPX-4-304	SS19MPX-4-316
6"	1.125	6.357	6.625	0.134	SS19MPX-6-304	SS19MPX-6-316

# Pipe Fittings



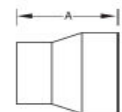
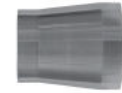
**SS19MPZ--- Clamp x Schedule 40 Pipe B/W Adapter**

Tube OD (Size)	A	B	C	Wall Thickness	Part Number 304	Part Number 316L
1/2"	1.125	0.622	0.840	0.109	SS19MPZ-0.5-304	SS19MPZ-0.5-316
3/4"	1.125	0.822	1.050	0.113	SS19MPZ-0.75-304	SS19MPZ-0.75-316
1"	1.125	1.049	1.315	0.133	SS19MPZ-1-304	SS19MPZ-1-316
1.5"	1.125	1.610	1.900	0.145	SS19MPZ-1.5-304	SS19MPZ-1.5-316
2"	1.125	2.067	2.375	0.154	SS19MPZ-2-304	SS19MPZ-2-316
2.5"	1.125	2.469	2.875	0.203	SS19MPZ-2.5-304	SS19MPZ-2.5-316
3"	1.125	3.068	3.500	0.216	SS19MPZ-3-304	SS19MPZ-3-316
4"	1.125	4.026	4.500	0.237	SS19MPZ-4-304	SS19MPZ-4-316
6"	1.125	6.065	6.625	0.280	SS19MPZ-6-304	SS19MPZ-6-316



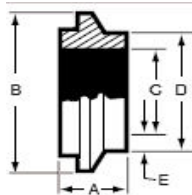
**SS19WV--- Tube OD B/W x Schedule 5 Pipe B/W Adapter**

Tube OD (Size)	A	Tube OD	Wall Thickness	Pipe ID	Part Number 304	Part Number 316L
1"	1.500	1.000	0.065	1.185	SS19WV-1-304	SS19WV-1-316
1.5"	1.500	1.500	0.065	1.770	SS19WV-1.5-304	SS19WV-1.5-316
2"	2.500	2.000	0.065	2.250	SS19WV-2-304	SS19WV-2-316
2.5"	3.000	2.500	0.083	2.700	SS19WV-2.5-304	SS19WV-2.5-316
3"	3.000	3.000	0.083	3.334	SS19WV-3-304	SS19WV-3-316
4"	4.000	4.000	0.109	4.334	SS19WV-4-304	SS19WV-4-316
6"	6.000	6.000	0.109	6.407	SS19WV-6-304	SS19WV-6-316



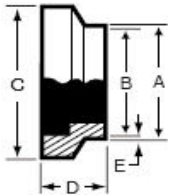
**SS19WX--- Tube OD B/W x Schedule 10 Pipe B/W Adapter**

Tube OD (Size)	A	Tube OD	Wall Thickness	Pipe ID	Part Number 304	Part Number 316L
1"	2.000	1.000	0.065	1.102	SS19WX-1-304	SS19WX-1-316
1.5"	2.500	1.500	0.065	1.682	SS19WX-1.5-304	SS19WX-1.5-316
2"	2.500	2.000	0.065	2.162	SS19WX-2-304	SS19WX-2-316
2.5"	2.500	2.500	0.083	2.640	SS19WX-2.5-304	SS19WX-2.5-316
3"	2.500	3.000	0.083	3.260	SS19WX-3-304	SS19WX-3-316
4"	3.000	4.000	0.109	4.260	SS19WX-4-304	SS19WX-4-316



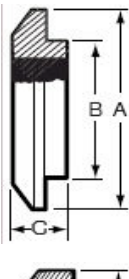
**SS14WIV--- Schedule 5 Short-Weld Male I-Line Ferrule**

Tube OD (Size)	A	B	C	D	Part Number 304	Part Number 316L
1"	0.945	2.000	1.185	1.315	SS14WIV-1-304	SS14WIV-1-316
1.5"	1.024	2.648	1.770	1.900	SS14WIV-1.5-304	SS14WIV-1.5-316
2"	1.142	3.317	2.245	2.375	SS14WIV-2-304	SS14WIV-2-316
2.5"	1.220	3.868	2.709	2.875	SS14WIV-2.5-304	SS14WIV-2.5-316
3"	1.343	4.882	3.334	3.500	SS14WIV-3-304	SS14WIV-3-316
4"	1.343	5.882	4.334	4.500	SS14WIV-4-304	SS14WIV-4-316



**SS15WIV--- Schedule 5 Short-Weld Female I-Line Ferrule**

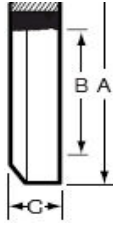
Tube OD (Size)	A	B	C	D	Part Number 304	Part Number 316L
1"	0.945	1.185	2.000	0.945	SS15WIV-1-304	SS15WIV-1-316
1.5"	1.024	1.770	2.648	1.024	SS15WIV-1.5-304	SS15WIV-1.5-316
2"	1.142	2.245	3.317	1.142	SS15WIV-2-304	SS15WIV-2-316
2.5"	1.220	2.709	3.868	1.220	SS15WIV-2.5-304	SS15WIV-2.5-316
3"	1.343	3.334	4.882	1.343	SS15WIV-3-304	SS15WIV-3-316
4"	1.343	4.334	5.882	1.343	SS15WIV-4-304	SS15WIV-4-316



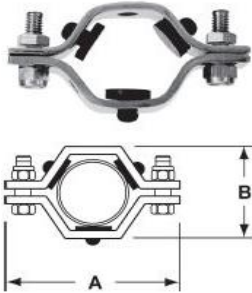
**SS16AI-14IV-- Schedule 5 Male I-Line End Cap**

Tube OD (Size)	A	B	C	Part Number 304	Part Number 316L
1"	2.000	1.756	0.500	SS16AI-14IV-1-304	SS16AI-14IV-1-316
1.5"	2.648	2.244	0.585	SS16AI-14IV-1.5-304	SS16AI-14IV-1.5-316
2"	3.317	2.756	0.750	SS16AI-14IV-2-304	SS16AI-14IV-2-316
2.5"	3.868	3.316	0.750	SS16AI-14IV-2.5-304	SS16AI-14IV-2.5-316
3"	4.882	4.316	0.750	SS16AI-14IV-3-304	SS16AI-14IV-3-316
4"	5.882	5.316	0.750	SS16AI-14IV-4-304	SS16AI-14IV-4-316

# Pipe Fittings



SS16AI-15IV-- Schedule 5 Female I-Line End Cap					
Tube OD (Size)	A	B	C	Part Number 304	Part Number 316L
1"	2.000	1.756	0.500	SS16AI-15IV-1-304	SS16AI-15IV-1-316
1.5"	2.648	2.244	0.585	SS16AI-15IV-1.5-304	SS16AI-15IV-1.5-316
2"	3.317	2.756	0.750	SS16AI-15IV-2-304	SS16AI-15IV-2-316
2.5"	3.868	3.316	0.750	SS16AI-15IV-2.5-304	SS16AI-15IV-2.5-316
3"	4.882	4.316	0.750	SS16AI-15IV-3-304	SS16AI-15IV-3-316
4"	5.582	5.316	0.750	SS16AI-15IV-4-304	SS16AI-15IV-4-316



SSPHG--- SS Pipe Hanger with Grommet				
Tube OD (Size)	A	B	Grommet Qty/Size	Part Number 304
1/2"	3.625	2.125	3-- 1/2"	SSPHG-0.50-304
3/4"	3.625	2.533	3-- 3/8"	SSPHG-0.75-304
1"	3.625	2.125	3-- 1/4"	SSPHG-1-304
1.5"	4.320	2.813	3-- 1/4"	SSPHG-1.5-304
2"	4.875	3.250	3-- 1/4"	SSPHG-2-304
2.5"	5.375	3.875	3-- 1/4"	SSPHG2.5-304
3"	6.167	4.320	4-- 1/8"	SSPHG-3-304
4"	7.438	5.125	4-- 1/8"	SSPHG-4-304
5"	8.062	5.625	4-- 1/8"	SSPHG-5-304
6"	9.875	7.125	5-- 1/8"	SSPHG-6-304

**Note: 8",10", & 12" Available**

SSPHP-- SS Pipe Hanger with Polypropylene			
Tube OD (Size)	A	B	Part Number 304
1/2"	2.687	2.000	SSPHP-0.50-304
3/4"	2.687	1.562	SSPHP-0.75-304
1"	3.625	2.125	SSPHP-1-304
1.5"	4.312	2.625	SSPHP-1.5-304
2"	4.875	3.125	SSPHP-2-304
2.5"	4.812	3.125	SSPHP-2.5-304
3"	6.000	4.250	SSPHP-3-304
4"	7.500	5.625	SSPHP-4-304
5"	8.375	6.375	SSPHP-5-304
6"	9.750	7.375	SSPHP-6-304

**Note: 8",10", & 12" Available**