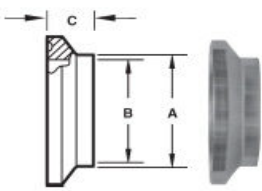


Q-Line Fittings

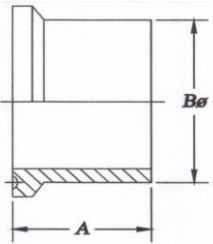


SS13IQ---Heavy Duty Q-Line Clamp, 304					
Tube OD (Size)	A	SPR @ 70° F *	SPR @ 250° F *	Part Number	
1"-- 1.5"	2.122	700	250	SS13IQ-1-1.5-304	
2"	2.654	450	250	SS13IQ-2-304	
2.5"	3.185	450	200	SS13IQ-2.5-304	
3"	3.717	350	150	SS13IQ-3-304	
4"	4.820	200	125	SS13IQ-4-304	
6"	7.689	150	100	SS13IQ-6-304	
8"	9.689	125	75	SS13IQ-8-304	

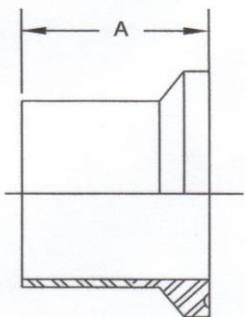
* Tighten Wing Nut to 25 in. lb. of torque



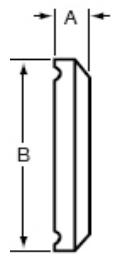
SS14WQ-- Short Weld Q-Line Ferrule						
Tube OD (Size)	A	B	C	Part Number 304	Part Number 316L	
1"	1.000	0.870	0.531	SS14WQ-1-304	SS14WQ-1-316	
1.5"	1.500	1.370	0.563	SS14WQ-1.5-304	SS14WQ-1.5-316	
2"	2.000	1.870	0.813	SS14WQ-2-304	SS14WQ-2-316	
2.5"	2.500	2.370	0.938	SS14WQ-2.5-304	SS14WQ-2.5-316	
3"	3.000	2.870	0.938	SS14WQ-3-304	SS14WQ-3-316	
4"	4.000	3.834	1.000	SS14WQ-4-304	SS14WQ-4-316	



SS14WHQ-- Q-Line Heavy Tank Ferrule					
Tube OD (Size)	A	B	C	Part Number 304	Part Number 316L
1"	1.500	1.250		SS14WHQ-1-304	SS14WHQ-1-316
1.5"	1.625	1.687		SS14WHQ-1.5-304	SS14WHQ-1.5-316
2"	1.750	2.250		SS14WHQ-2-304	SS14WHQ-2-316
2.5"	1.750	2.750		SS14WHQ-2.5-304	SS14WHQ-2.5-316
3"	1.812	3.312		SS14WHQ-3-304	SS14WHQ-3-316
4"	2.125	4.250		SS14WHQ-4-304	SS14WHQ-4-316

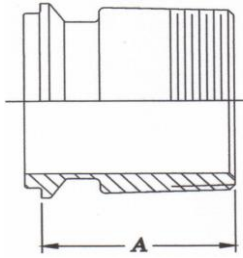


SS14WLQ-- Q-Line Light Tank Ferrule					
Tube OD (Size)	A	B	C	Part Number 304	Part Number 316L
1"	1.750			SS14WLQ-1-304	SS14WLQ-1-316
1.5"	2.032			SS14WLQ-1.5-304	SS14WLQ-1.5-316
2"	2.312			SS14WLQ-2-304	SS14WLQ-2-316
2.5"	2.500			SS14WLQ-2.5-304	SS14WLQ-2.5-316
3"	2.687			SS14WLQ-3-304	SS14WLQ-3-316
4"	3.000			SS14WLQ-4-304	SS14WLQ-4-316

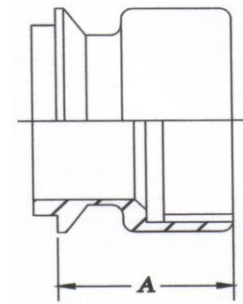


SS16AQ-14Q-- Q-Line End Cap					
Tube OD (Size)	A	B	C	Part Number 304	Part Number 316L
1"	0.312	2.000		SS16AQ-14Q-1-304	SS16AQ-14Q-1-316
1.5"	0.312	2.000		SS16AQ-14Q-1.5-304	SS16AQ-14Q-1.5-316
2"	0.437	2.648		SS16AQ-14Q-2-304	SS16AQ-14Q-2-316
2.5"	0.500	3.313		SS16AQ-14Q-2.5-304	SS16AQ-14Q-2.5-316
3"	0.500	3.870		SS16AQ-14Q-3-304	SS16AQ-14Q-3-316
4"	0.500	4.870		SS16AQ-14Q-4-304	SS16AQ-14Q-4-316

Q-Line Fittings



SS21Q- Q-Line x (MNPT) Adapter						
Tube OD (Size)	A	B	C	D	Part Number 304	Part Number 316L
1" x 1"	0.870				SS21Q-1-304	SS21Q-1-316
1.5" x 1.5"	1.370				SS21Q-1.5-304	SS21Q-1.5-316
2" x 2"	1.870				SS21Q-2-304	SS21Q-2-316
2.5" x 2.5"	2.370				SS21Q-2.5-304	SS21Q-2.5-316
3" x 3"	2.870				SS21Q-3-304	SS21Q-3-316
4" x 4"	3.813				SS21Q-4-304	SS21Q-4-316



SS22Q- Q-Line x (FNPT) Adapter						
Tube OD (Size)	A	B	C	D	Part Number 304	Part Number 316L
1" x 1"	0.870				SS22Q-1-304	SS22Q-1-316
1.5" x 1.5"	1.370				SS22Q-1.5-304	SS22Q-1.5-316
2" x 2"	1.870				SS22Q-2-304	SS22Q-2-316
2.5" x 2.5"	2.370				SS22Q-2.5-304	SS22Q-2.5-316
3" x 3"	2.469				SS22Q-3-304	SS22Q-3-316
4" x 4"	3.125				SS22Q-4-304	SS22Q-4-316