

Unpolished Tube OD Fittings



SS2WCL--- 90° Butt weld Elbows (1.5 x CLR), Mill Finish ID/OD						
Tube OD (Size)	A	Nominal Wall		Part Number 304	Part Number 316L	
1"	1.500	0.065		SS2WCL1-1-304	SS2WCL1-1-316	
1.5"	2.250	0.065		SS2WCL1-1.5-304	SS2WCL1-1.5-316	
2"	3.000	0.065		SS2WCL1-2-304	SS2WCL1-2-316	
2.5"	3.750	0.065		SS2WCL1-2.5-304	SS2WCL1-2.5-316	
3"	4.500	0.065		SS2WCL1-3-304	SS2WCL1-3-316	
4"	6.000	0.083		SS2WCL1-4-304	SS2WCL1-4-316	
6"	9.000	0.109		SS2WCL1-6-304	SS2WCL1-6-316	
8"	12.00	0.120		SS2WCL1-8-304	SS2WCL1-8-316	
10"	15.00	0.120		SS2WCL1-10-304	SS2WCL1-10-316	
12"	18.00	0.120		SS2WCL1-12-304	SS2WCL1-12-316	



SS2S---- 90° Butt weld Elbows w/tangent, Mill Finish ID/OD						
Tube OD (Size)	A	Nominal Wall		Part Number 304	Part Number 316L	
1"	2.062	0.065		SS2S17-1-304	SS2S1-1-316	
1.5"	2.937	0.065		SS2S1-1.5-304	SS2S1-1.5-316	
2"	4.062	0.065		SS2S1-2-304	SS2S1-2-316	
2.5"	5.187	0.065		SS2S1-2.5-304	SS2S1-2.5-316	
3"	6.312	0.065		SS2S1-3-304	SS2S1-3-316	
4"	8.312	0.083		SS2S1-4-304	SS2S1-4-316	



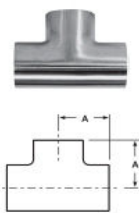
SS2WUL--180° Butt weld Return Bends, Mill Finish ID/OD						
Tube OD (Size)	A	B	Nominal Wall	Part Number 304	Part Number 316L	
1"	3.000	2.000	0.065	SS2WUL1-1-304	SS2WUL1-1-316	
1.5"	4.500	3.000	0.065	SS2WUL1-1.5-304	SS2WUL1-1.5-316	
2"	6.000	4.000	0.065	SS2WUL1-2-304	SS2WUL1-2-316	
2.5"	7.500	5.000	0.065	SS2WUL1-2.5-304	SS2WUL1-2.5-316	
3"	9.000	6.000	0.065	SS2WUL1-3-304	SS2WUL1-3-316	
4"	12.00	8.000	0.083	SS2WUL1-4-304	SS2WUL1-4-316	



SS2WK--- 45° Butt weld Elbows, less tangent, Mill Finish ID/OD						
Tube OD (Size)	A	R	Nominal Wall	Part Number 304	Part Number 316L	
1"	0.625	1.500	0.065	SS2WK1-1-304	SS2WK1-1-316	
1.5"	0.937	2.250	0.065	SS2WK1-1.5-304	SS2WK1-1.5-316	
2"	1.250	3.000	0.065	SS2WK1-2-304	SS2WK1-2-316	
2.5"	1.562	3.750	0.065	SS2WK1-2.5-304	SS2WK1-2.5-316	
3"	1.875	4.500	0.065	SS2WK1-3-304	SS2WK1-3-316	
4"	2.500	6.000	0.083	SS2WK1-4-304	SS2WK1-4-316	
6"	3.750	9.000	0.109	SS2WK1-6-304	SS2WK1-6-316	
8"	5.000	12.000	0.120	SS2WK1-8-304	SS2WK1-8-316	
10"	6.250	15.000	0.120	SS2WK1-10-304	SS2WK1-10-316	
12"	7.500	18.000	0.120	SS2WK1-12-304	SS2WK1-12-316	

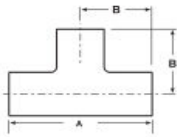


SS2KS---- 45° Butt weld Elbows w/tangent, Mill Finish ID/OD						
Tube OD (Size)	A	Nominal Wall		Part Number 304	Part Number 316L	
1"	1.188	0.065		SS2KS1-1-304	SS2KS1-1-316	
1.5"	1.625	0.065		SS2KS1-1.5-304	SS2KS1-1.5-316	
2"	2.312	0.065		SS2KS1-2-304	SS2KS1-2-316	
2.5"	3.000	0.065		SS2KS1-2.5-304	SS2KS1-2.5-316	
3"	3.688	0.065		SS2KS1-3-304	SS2KS1-3-316	
4"	4.812	0.083		SS2KS1-4-304	SS2KS1-4-316	

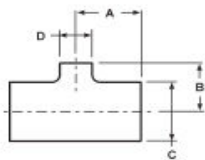


SS7WWW--- Short Butt weld Tees, Mill Finish ID/OD						
Tube OD (Size)	A	Nominal Wall		Part Number 304	Part Number 316L	
1"	1.125	0.065		SS7WWW1-1-304	SS7WWW1-1-316	
1.5"	1.656	0.065		SS7WWW1-1.5-304	SS7WWW1-1.5-316	
2"	2.062	0.065		SS7WWW1-2-304	SS7WWW1-2-316	
2.5"	2.344	0.065		SS7WWW1-2.5-304	SS7WWW1-2.5-316	
3"	2.594	0.065		SS7WWW1-3-304	SS7WWW1-3-316	
4"	3.438	0.083		SS7WWW1-4-304	SS7WWW1-4-316	

Unpolished Tube OD Fittings



SS7W--- Long Butt Weld Tees, Mill Finish ID/OD						
Tube OD (Size)	A	B	Nominal Wall		Part Number 304	Part Number 316L
1"	3.750	1.875	0.065		SS7W-1-304	SS7W1-1-316
1.5"	4.500	2.250	0.065		SS7W1-1.5-304	SS7W1-1.5-316
2"	6.000	3.000	0.065		SS7W1-2-304	SS7W1-2-316
2.5"	6.000	3.000	0.065		SS7W1-2.5-304	SS7W1-2.5-316
3"	6.500	3.250	0.065		SS7W1-3-304	SS7W1-3-316
4"	7.750	3.875	0.083		SS7W1-4-304	SS7W1-4-316
6"	11.25	5.625	0.109		SS7W1-6-304	SS7W1-6-316
8"	14.00	7.000	0.120		SS7W1-8-304	SS7W1-8-316
10"	17.00	8.500	0.120		SS7W1-10-304	SS7W1-10-316
12"	20.00	10.00	0.120		SS7W1-12-304	SS7W1-12-316



SS7RWWW: Butt Weld Reducing Tees, Mill Finish ID/OD						
Tube OD (Size)	A	B	C	D	Part Number 304	Part Number 316L
3/4" x 1/2"	2.125	2.125	0.750	0.500		SS7RWWW1-0.75 x 0.5-316
1" x 1/2"	2.125	2.125	1.000	0.500		SS7RWWW1- 1 x 0.5- 316
1" x 3/4"	2.125	2.125	1.000	0.750		SS7RWWW1- 1 x 0.75- 316
1.5" x 1/2"	2.250	2.250	1.500	0.500		SS7RWWW1- 1.5 x 0.5- 316
1.5" x 3/4"	2.250	2.250	1.500	0.750		SS7RWWW1- 1.5 x 0.75- 316
1.5" x 1"	1.656	1.375	1.500	1.000	SS7RWWW1- 1.5 x 1- 304	SS7RWWW1- 1.5 x 1- 316
2" x 1"	2.062	1.625	2.000	1.000	SS7RWWW1- 2 x 1- 304	SS7RWWW1- 2 x 1- 316
2" x 1.5"	2.062	1.906	1.500	1.500	SS7RWWW1- 2 x 1.5- 304	SS7RWWW1- 2 x 1.5- 316
2.5" x 1.5"	2.344	2.156	2.500	1.500	SS7RWWW1- 2.5 x 1.5- 304	SS7RWWW1- 2.5 x 1.5- 316
2.5" x 2"	2.344	2.312	2.500	2.000	SS7RWWW1- 2.5 x 2- 304	SS7RWWW1- 2.5 x 2- 316
3" x 1.5"	2.594	2.406	3.000	1.500	SS7RWWW1- 3 x 1.5- 304	SS7RWWW1- 3 x 1.5- 316
3" x 2"	2.594	2.562	3.000	2.000	SS7RWWW1- 3 x 2- 304	SS7RWWW1- 3 x 2- 316
3" x 2.5"	2.594	2.594	3.000	2.500	SS7RWWW1- 3 x 2.5- 304	SS7RWWW1- 3 x 2.5- 316
4" x 1.5"	3.438	2.906	4.000	1.500	SS7RWWW1- 4 x 1.5- 304	SS7RWWW1- 4 x 1.5- 316
4" x 2"	3.438	3.062	4.000	2.000	SS7RWWW1- 4 x 2- 304	SS7RWWW1- 4 x 2- 316
4" x 2.5"	3.438	3.094	4.000	2.500	SS7RWWW1- 4 x 2.5- 304	SS7RWWW1- 4 x 2.5- 316
4" x 3"	3.438	3.094	4.000	3.000	SS7RWWW1- 4 x 3- 304	SS7RWWW1- 4 x 3- 316
6" x 2"	5.625	4.500	6.000	2.000	SS7RWWW1- 6 x 2- 304	SS7RWWW1- 6 x 2- 316
6" x 3"	5.625	4.875	6.000	3.000	SS7RWWW1- 6 x 3- 304	SS7RWWW1- 6 x 3- 316
6" x 4"	5.625	5.125	6.000	4.000	SS7RWWW1- 6 x 4- 304	SS7RWWW1- 6 x 4- 316



SS16W-- WELD End Caps						
Tube OD (Size)	A				Part Number 304	Part Number 316L
1/2"	0.250				SS16W-0.5-304	SS16W-0.5-316
3/4"	0.312				SS16W-0.75-304	SS16W-0.75-316
1"	0.375				SS16W-1-304	SS16W-1-316
1.5"	0.562				SS16W-1.5-304	SS16W-1.5-316
2"	0.750				SS16W-2-304	SS16W-2-316
2.5"	1.000				SS16W-2.5-304	SS16W-2.5-316
3"	1.250				SS16W-3-304	SS16W-3-316
4"	1.500				SS16W-4-304	SS16W-4-316
6"	2.000				SS16W-6-304	SS16W-6-316
8"	2.500				SS16W-8-304	SS16W-8-316
10"	3.000				SS16W-10-304	SS16W-10-316
12"	3.000				SS16W-12-304	SS16W-12-316

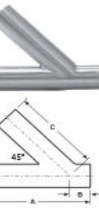


SS19WB--- Weld End x Male NPT						
Tube OD (Size)	A	Nominal Wall			Part Number 304	Part Number 316L
1/2"	1.625	0.065			SS19WB-0.5-304	SS19WB-0.5-316
3/4"	1.625	0.065			SS19WB-0.75-304	SS19WB-0.75-316
1"	1.750	0.065			SS19WB-1-304	SS19WB-1-316
1.5"	1.750	0.065			SS19WB-1.5-304	SS19WB-1.5-316
2"	1.812	0.065			SS19WB-2-304	SS19WB-2-316
2.5"	2.312	0.065			SS19WB-2.5-304	SS19WB-2.5-316
3"	2.500	0.065			SS19WB-3-304	SS19WB-3-316
4"	2.562	0.083			SS19WB-4-304	SS19WB-4-316
6"	3.000	0.109			SS19WB-6-304	SS19WB-6-316

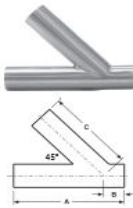
Unpolished Tube OD Fittings



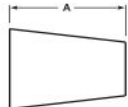
SS22WB-- Weld End x Female NPT						
Tube OD (Size)	A	Nominal Wall		Part Number 304	Part Number 316L	
1/2"	1.250	0.065			SS22WB-0.5-304	SS22WB-0.5-316
3/4"	1.625	0.065			SS22WB-0.75-304	SS22WB-0.75-316
1"	1.125	0.065			SS22WB-1-304	SS22WB-1-316
1.5"	1.437	0.065			SS22WB-1.5-304	SS22WB-1.5-316
2"	1.437	0.065			SS22WB-2-304	SS22WB-2-316
2.5"	1.625	0.065			SS22WB-2.5-304	SS22WB-2.5-316
3"	1.812	0.065			SS22WB-3-304	SS22WB-3-316
4"	2.000	0.083			SS22WB-4-304	SS22WB-4-316



SS28Y-- Butt Weld True Y, Mill Finish ID/OD						
Tube OD (Size)	A	B	Nominal Wall	Part Number 304	Part Number 316L	
1"	2.500	2.250	0.065		SS28Y1-1-304	SS28Y1-1-316
1.5"	2.750	2.250	0.065		SS28Y1-1.5-304	SS28Y1-1.5-316
2"	8.625	3.000	0.065		SS28Y1-2-304	SS28Y1-2-316
2.5"	4.875	3.750	0.065		SS28Y1-2.5-304	SS28Y1-2.5-316
3"	5.375	4.250	0.065		SS28Y1-3-304	SS28Y1-3-316
4"	7.500	5.750	0.083		SS28Y1-4-304	SS28Y1-4-316

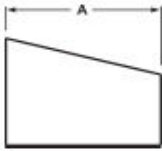


SS28L-- Butt Weld Lateral, Mill Finish ID/OD							
Tube OD (Size)	A	B	C	Nominal Wall	Part Number 304	Part Number 316L	
1"	5.937	0.625	5.375	0.065		SS28L1-1-304	SS28L1-1-316
1.5"	7.313	1.000	6.500	0.065		SS28L1-1.5-304	SS28L1-1.5-316
2"	8.687	1.375	7.562	0.065		SS28L1-2-304	SS28L1-2-316
2.5"	10.000	1.500	8.875	0.065		SS28L1-2.5-304	SS28L1-2.5-316
3"	10.750	1.500	9.125	0.065		SS28L1-3-304	SS28L1-3-316
4"	12.813	2.750	12.000	0.083		SS28L1-4-304	SS28L1-4-316

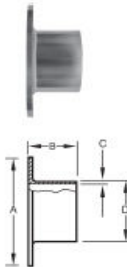


SS31W-- Butt Weld Concentric Reducers, Mill Finish ID/OD						
Tube OD (Size)	A	B	C	Nominal Wall	Part Number 304	Part Number 316L
3/4" x 1/2"	1.000	0.750	0.500	0.065		SS31W1- .75 x .50- 316L
1" x 1/2"	1.500	1.000	0.500	0.065		SS31W1- 1 x .50- 316L
1" x 3/4"	1.000	1.000	0.750	0.065		SS31W1- 1 x .75- 316L
1.5" x 1/2"	3.500	1.500	0.500	0.065		SS31W1- 1.5 x .50- 316L
1.5" x 3/4"	3.000	1.500	0.750	0.065		SS31W1- 1.5 x .75- 316L
1.5" x 1"	2.000	1.500	1.000	0.065	SS31W1- 1.5 x 1- 304	SS31W1- 1.5 x 1- 316L
2" x 1"	4.000	2.000	1.000	0.065	SS31W1- 2 x 1- 304	SS31W1- 2 x 1- 316L
2" x 1.5"	2.000	1.500	1.500	0.065	SS31W1- 2 x 1.5- 304	SS31W1- 2 x 1.5- 316L
2.5" x 1.5"	4.000	2.500	1.500	0.065	SS31W1- 2.5 x 1.5- 304	SS31W1- 2.5 x 1.5- 316L
2.5" x 2"	2.000	2.500	2.000	0.065	SS31W1- 2.5 x 2- 304	SS31W1- 2.5 x 2- 316L
3" x 1.5"	6.000	3.000	1.500	0.065	SS31W1- 3 x 1.5- 304	SS31W1- 3 x 1.5- 316L
3" x 2"	4.000	3.000	2.000	0.065	SS31W1- 3 x 2- 304	SS31W1- 3 x 2- 316L
3" x 2.5"	2.000	3.000	2.500	0.065	SS31W1- 3 x 2.5- 304	SS31W1- 3 x 2.5- 316L
4" x 1.5"	10.00	4.000	1.500	0.083	SS31W1- 4 x 1.5- 304	SS31W1- 4 x 1.5- 316L
4" x 2"	8.000	4.000	2.000	0.083	SS31W1- 4 x 2- 304	SS31W1- 4 x 2- 316L
4" x 2.5"	6.000	4.000	2.500	0.083	SS31W1- 4 x 2.5- 304	SS31W1- 4 x 2.5- 316L
4" x 3"	4.000	4.000	3.000	0.083	SS31W1- 4 x 3- 304	SS31W1- 4 x 3- 316L
6" x 2"	5.500	6.000	2.000	0.109	SS31W1- 6 x 2- 304	SS31W1- 6 x 2- 316L
6" x 3"	5.500	6.000	3.000	0.109	SS31W1- 6 x 3- 304	SS31W1- 6 x 3- 316L
6" x 4"	5.500	6.000	4.000	0.109	SS31W1- 6 x 4- 304	SS31W1- 6 x 4- 316L

Unpolished Tube OD Fittings



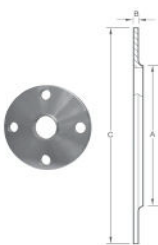
SS32W-- Butt weld Eccentric Reducers, Mill Finish ID/OD						
Tube OD (Size)	A	B	C	Nominal Wall	Part Number 304	Part Number 316L
3/4" x 1/2"	1.000	0.750	0.500	0.065		SS32W1-.75 x .50- 316L
1" x 1/2"	2.000	1.000	0.500	0.065		SS32W1- 1 x .50- 316L
1" x 3/4"	1.000	1.000	0.750	0.065		SS32W1- 1 x .75- 316L
1.5" x 1/2"	4.000	1.500	0.500	0.065		SS32W1- 1.5 x .50- 316L
1.5" x 3/4"	3.000	1.500	0.750	0.065		SS32W1- 1.5 x .75- 316L
1.5" x 1"	2.000	1.500	1.000	0.065	SS32W1- 1.5 x 1- 304	SS32W1- 1.5 x 1- 316L
2" x 1"	4.000	2.000	1.000	0.065	SS32W1- 2 x 1- 304	SS32W1- 2 x 1- 316L
2" x 1.5"	2.000	1.500	1.500	0.065	SS32W1- 2 x 1.5- 304	SS32W1- 2 x 1.5- 316L
2.5" x 1.5"	4.000	2.500	1.500	0.065	SS32W1- 2.5 x 1.5- 304	SS32W1- 2.5 x 1.5- 316L
2.5" x 2"	2.000	2.500	2.000	0.065	SS32W1- 2.5 x 2- 304	SS32W1- 2.5 x 2- 316L
3" x 1.5"	6.000	3.000	1.500	0.065	SS32W1- 3 x 1.5- 304	SS32W1- 3 x 1.5- 316L
3" x 2"	4.000	3.000	2.000	0.065	SS32W1- 3 x 2- 304	SS32W1- 3 x 2- 316L
3" x 2.5"	2.000	3.000	2.500	0.065	SS32W1- 3 x 2.5- 304	SS32W1- 3 x 2.5- 316L
4" x 1.5"	10.00	4.000	1.500	0.083	SS32W1- 4 x 1.5- 304	SS32W1- 4 x 1.5- 316L
4" x 2"	8.000	4.000	2.000	0.083	SS32W1- 4 x 2- 304	SS32W1- 4 x 2- 316L
4" x 2.5"	6.000	4.000	2.500	0.083	SS32W1- 4 x 2.5- 304	SS32W1- 4 x 2.5- 316L
4" x 3"	4.000	4.000	3.000	0.083	SS32W1- 4 x 3- 304	SS32W1- 4 x 3- 316L
6" x 2"	5.500	6.000	2.000	0.109	SS32W1- 6 x 2- 304	SS32W1- 6 x 2- 316L
6" x 3"	5.500	6.000	3.000	0.109	SS32W1- 6 x 3- 304	SS32W1- 6 x 3- 316L
6" x 4"	5.500	6.000	4.000	0.109	SS32W1- 6 x 4- 304	SS32W1- 6 x 4- 316L



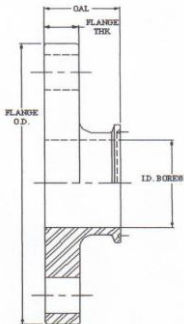
SST14VBA--- Stub End-- Type "A"					
Tube OD (Size)	A	B	C	D	Part Number 316L
1/2"	1.625	2.000	0.065	0.500	SST14VBA-0.5-316
3/4"	1.687	2.000	0.065	0.750	SST14VBA-0.75-316
1"	1.625	2.000	0.065	1.000	SST14VBA-1-316
1.5"	1.750	2.875	0.065	1.500	SST14VBA-1.5-316
2"	1.500	3.625	0.065	2.000	SST14VBA-2-316
2.5"	2.000	4.125	0.065	2.500	SST14VBA-2.5-316
3"	2.250	5.000	0.065	3.000	SST14VBA-3-316
4"	2.625	6.187	0.083	4.000	SST14VBA-4-316
6"	3.000	8.500	0.109	6.000	SST14VBA-6-316



SS38SL-- Tube Flanges						
Tube OD (Size)	A	B	C	# & Dia. Bolt Holes	Part Number 304	Part Number 316L
1"	4.250	0.375	1.063	4/.625	SS38SL-1-304	SS38SL-1-316
1.5"	5.000	0.375	1.563	4/.625	SS38SL-1.5-304	SS38SL-1.5-316
2"	6.000	0.437	2.063	4/.750	SS38SL-2-304	SS38SL-2-316
2.5"	7.000	0.437	2.563	4/.750	SS38SL-2.5-304	SS38SL-2.5-316
3"	7.500	0.500	3.063	4/.750	SS38SL-3-304	SS38SL-3-316
4"	9.000	0.562	4.063	8/.750	SS38SL-4-304	SS38SL-4-316
6"	11.00	0.562	6.063	8/.875	SS38SL-6-304	SS38SL-6-316
8"	13.50	0.687	8.063	8/.875	SS38SL-8-304	SS38SL-8-316



SS38W-- Weld Neck Flanges						
Tube OD (Size)	A	B	C	# & Dia. Bolt Holes	Part Number 304	Part Number 316L
1"	1.000	0.375	4.250	4/.625	SS38W-1-304	SS38W-1-316
1.5"	1.500	0.375	5.000	4/.625	SS38W-1.5-304	SS38W-1.5-316
2"	2.000	0.500	6.000	4/.750	SS38W-2-304	SS38W-2-316
2.5"	2.500	0.500	7.000	4/.750	SS38W-2.5-304	SS38W-2.5-316
3"	3.000	0.500	7.500	4/.750	SS38W-3-304	SS38W-3-316
4"	4.000	0.500	9.000	8/.750	SS38W-4-304	SS38W-4-316
6"	6.000	0.500	11.00	8/.875	SS38W-6-304	SS38W-6-316



SS51-14MP--- Flange x Clamp Adapter						
Tube OD (Size)	A	B	C	D	E	F
1/2"	1.625					
3/4"	1.625					
1"	1.625					
1.5"	1.625					
2"	1.750					
2.5"	1.750					
3"	1.750					
4"	1.750					
6"	2.125					