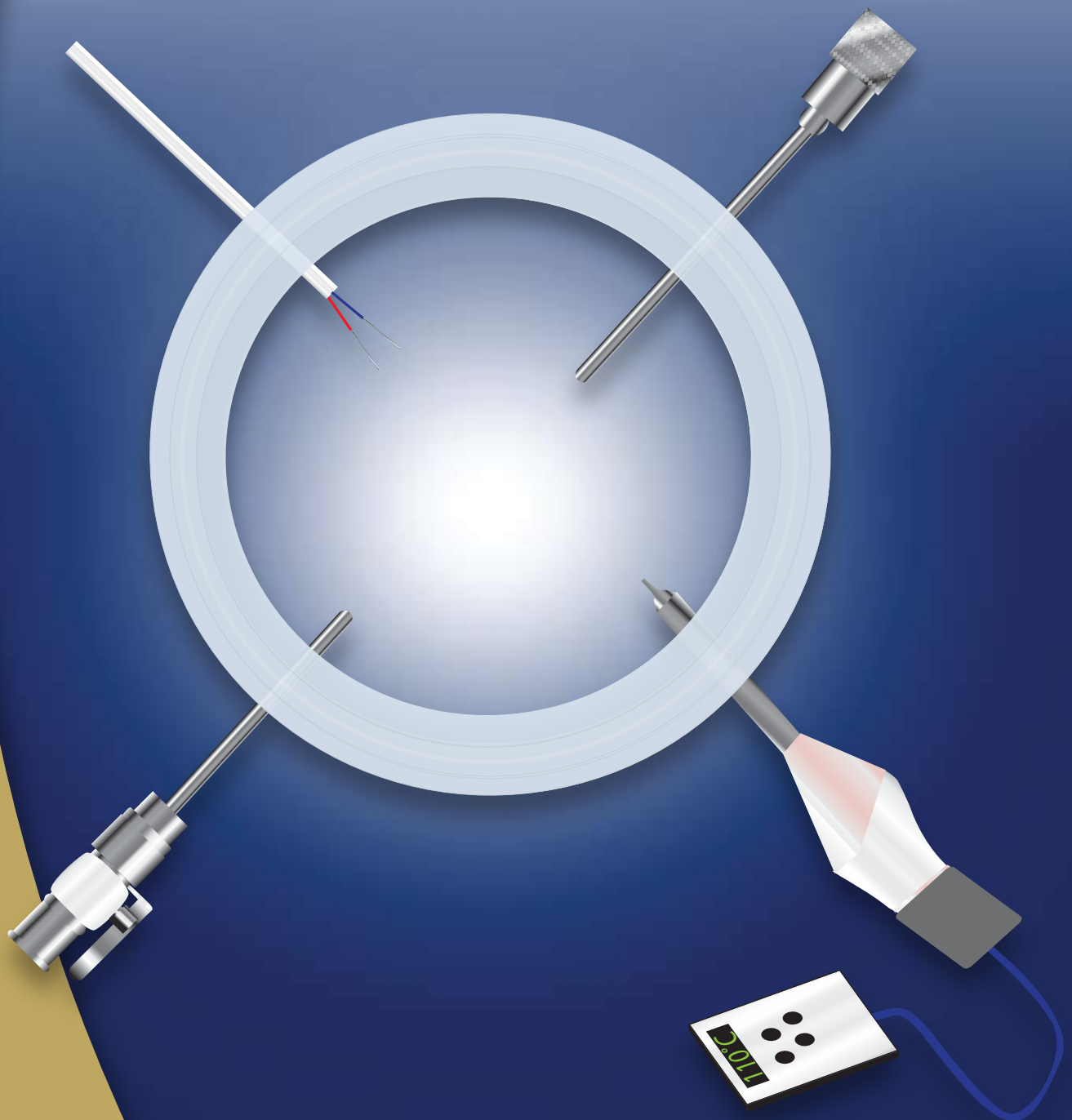




POLYSOURCE GASKET™

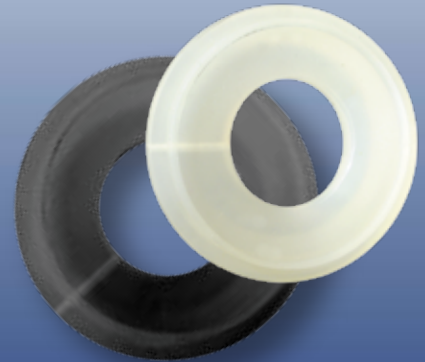
Validation System

EASY SAMPLING AND THERMAL MAPPING
FOR PROCESS VALIDATION THROUGHOUT
YOUR LINE





Validate Your High Purity System



Using a Source Gasket for thermal analysis and product sampling.

FlowSmart uses our pedigree of materials to produce the Source Gasket validation system. The Source Gasket allows you to gain access to your flow stream through a conventional sanitary connection by using Source Gasket and Source Clamp assembly.

The Source Gasket Validation System performs by combining a gasket that has 1, 2, 3, or 4 Ports combined with a clamp that is slotted and bored wider to accept the thicker Source Gasket. The assembly allows a thermocouple wire to be fed into the pipeline for thermal mapping or a tube can be inserted to draw samples of process fluids. Ingredients can be metered into the process flow through an injection tube.



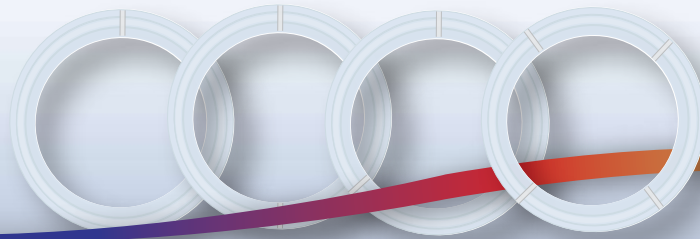
Safety and Performance Improvement

Using the Source Gasket for validation protects operators from steam burns and exposure. Thermocouple wires and sensors are placed into the desired area of a process stream and sealed completely from atmosphere for operator safety. Installation and assembly can be made quickly and efficiently simply by removing your standard clamp and gasket and placing the Source Clamp and gasket into the existing clamp ferrules. Wires are then easily fed through gasket ports into the process stream.

Sampling through a Source Gasket is easier than ever. Nothing more than an existing clamp connection is needed to target an area for process issues. The flexibility of the Source Gasket provides for isolated sampling without having to cut new ports in your pipe lines. No special welding or custom fittings are required, and no dead legs are created with the use of the Source Gasket.

The Source Gaskets is available in $\frac{1}{2}$, $\frac{3}{4}$ ", 1", 1.5", 2", 2.5", 3" and 4" Sizes. Choose from 1, 2, 3, or 4 Ports in Platinum Silicon, EPDM or Viton. Source Gaskets are constructed of USP class VI tested and FDA compliant materials.





Platinum Silicone Part Numbers

	1-Port	2-Port	3-Port	4-Port
1/2"-3/4"	G-TH-050-RXPX-1	G-TH-050-RXPX-2	G-TH-050-RXPX-3	G-TH-050-RXPX-4
1-1.5"	G-TH-100-RXPX-1	G-TH-100-RXPX-2	G-TH-100-RXPX-3	G-TH-100-RXPX-4
2"	G-TH-200-RXPX-1	G-TH-200-RXPX-2	G-TH-200-RXPX-3	G-TH-200-RXPX-4
2.5"	G-TH-250-RXPX-1	G-TH-250-RXPX-2	G-TH-250-RXPX-3	G-TH-250-RXPX-4
3"	G-TH-300-RXPX-1	G-TH-300-RXPX-2	G-TH-300-RXPX-3	G-TH-300-RXPX-4
4"	G-TH-400-RXPX-1	G-TH-400-RXPX-2	G-TH-400-RXPX-3	G-TH-400-RXPX-4

EPDM Part Numbers

	1-Port	2-Port	3-Port	4-Port
1/2-3/4"	G-TH-050-V-1	G-TH-050-V-2	G-TH-050-V-3	G-TH-050-V-4
1-1.5"	G-TH-100-V-1	G-TH-100-V-2	G-TH-100-V-3	G-TH-100-V-4
2"	G-TH-200-V-1	G-TH-200-V-2	G-TH-200-V-3	G-TH-200-V-4
2.5"	G-TH-250-V-1	G-TH-250-V-2	G-TH-250-V-3	G-TH-250-V-4
3"	G-TH-300-V-1	G-TH-300-V-2	G-TH-300-V-3	G-TH-300-V-4
4"	G-TH-400-V-1	G-TH-400-V-2	G-TH-400-V-3	G-TH-400-V-4

Viton Part Numbers

	1-Port	2-Port	3-Port	4-Port
1/2-3/4"	G-TH-050-V-1	G-TH-050-V-2	G-TH-050-V-3	G-TH-050-V-4
1-1.5"	G-TH-100-V-1	G-TH-100-V-2	G-TH-100-V-3	G-TH-100-V-4
2"	G-TH-200-V-1	G-TH-200-V-2	G-TH-200-V-3	G-TH-200-V-4
2.5"	G-TH-250-V-1	G-TH-250-V-2	G-TH-250-V-3	G-TH-250-V-4
3"	G-TH-300-V-1	G-TH-300-V-2	G-TH-300-V-3	G-TH-300-V-4
4"	G-TH-400-V-1	G-TH-400-V-2	G-TH-400-V-3	G-TH-400-V-4

Clamp Part Numbers

	1-Port	2-Port	3-Port	4-Port
1/2-3/4"	CL-TH-050-1	CL-TH-050-2	CL-TH-050-3	CL-TH-050-4
1-1.5"	CL-TH-100-1	CL-TH-100-2	CL-TH-100-3	CL-TH-100-4
2"	CL-TH-200-1	CL-TH-200-2	CL-TH-200-3	CL-TH-200-4
2.5"	CL-TH-250-1	CL-TH-250-2	CL-TH-250-3	CL-TH-250-4
3"	CL-TH-300-1	CL-TH-300-2	CL-TH-300-3	CL-TH-300-4
4"	CL-TH-400-1	CL-TH-400-2	CL-TH-400-3	CL-TH-400-4



FLOW SMART INC.

103 Davis Drive.
 Seaford, DE 19973
 phone: 302-536-6388 fax: 302-628-9032
 email: solutions@flowsmart.com
 www.flowsmartinc.com